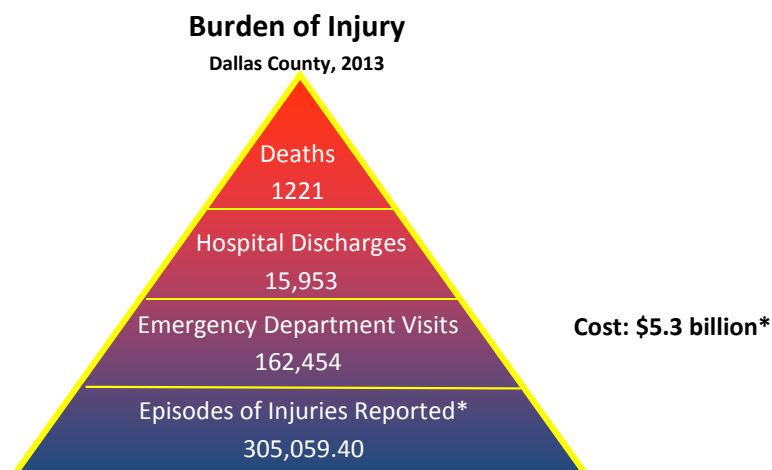


## Injuries Deaths in Dallas County 1997-2015 Overview

### Burden of Injury

Injury is....the leading cause of death for Dallas County residents ages 1 to 44.  
 the third leading cause of death for Dallas County residents of all ages  
 the biggest killer of children who live in Dallas County

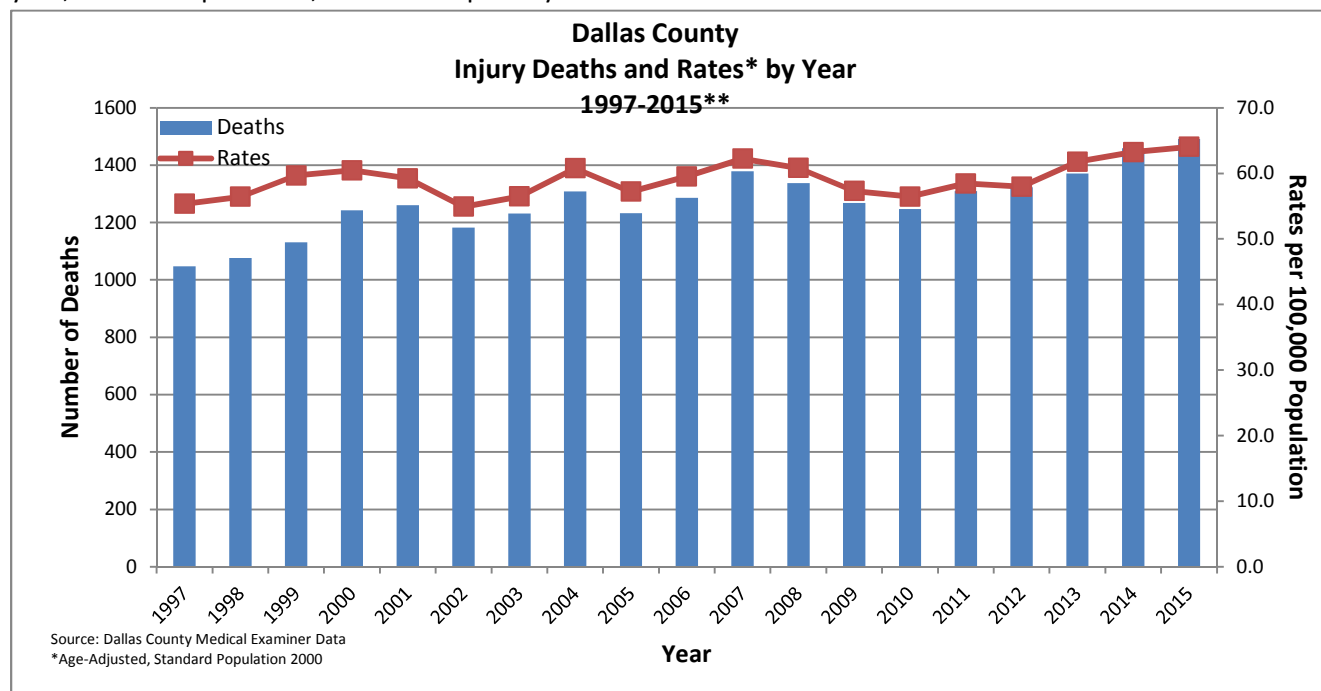
In 2013, injuries cost the citizens of Dallas County an estimated \$5.3 billion dollars, including health care cost and lost productivity.



Source: IPC Greater Dallas  
 \*Estimates based on national rates

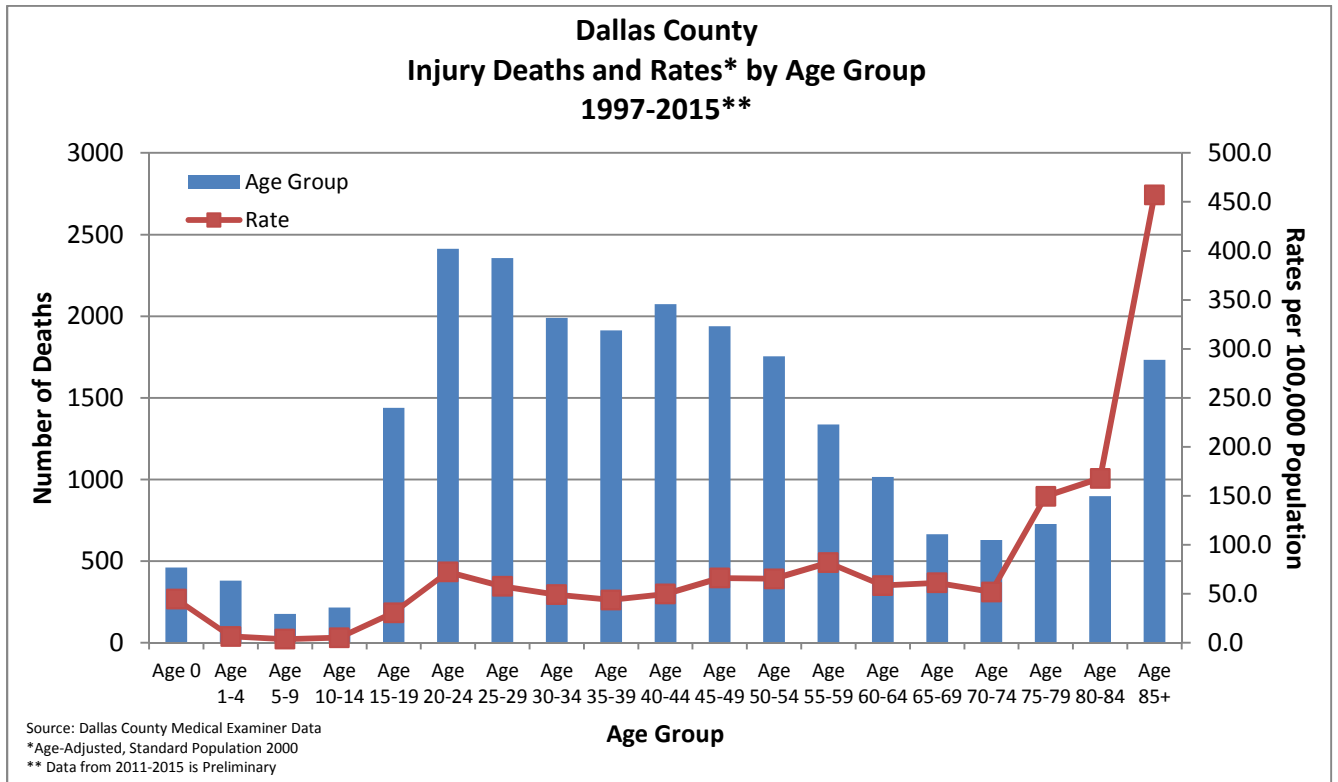
### Injury Deaths in Dallas County

From 1997 to 2015, 24,182 people died in Dallas County due to injuries, an average of 1272 deaths per year, 24 deaths per week, or 3 deaths per day.



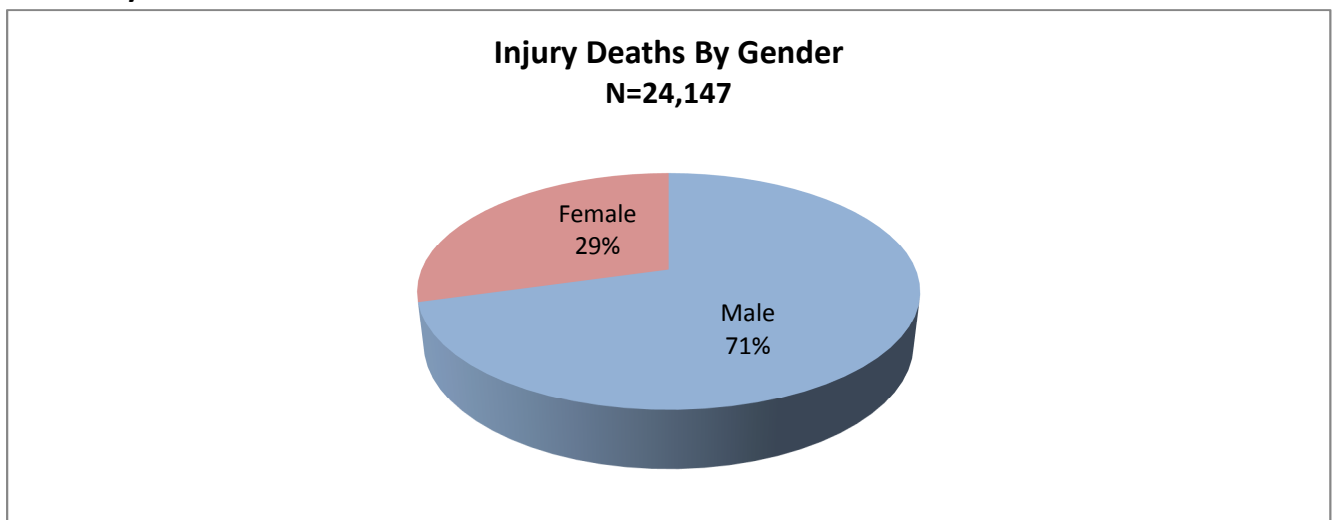
From 1997 to 2015, trauma-related deaths in Dallas County increased by 42% and the age-adjusted rate increased by 16%. These numbers include deaths from all manners (Unintentional, Homicide, Suicide and Undetermined).

### Deaths by Age Group



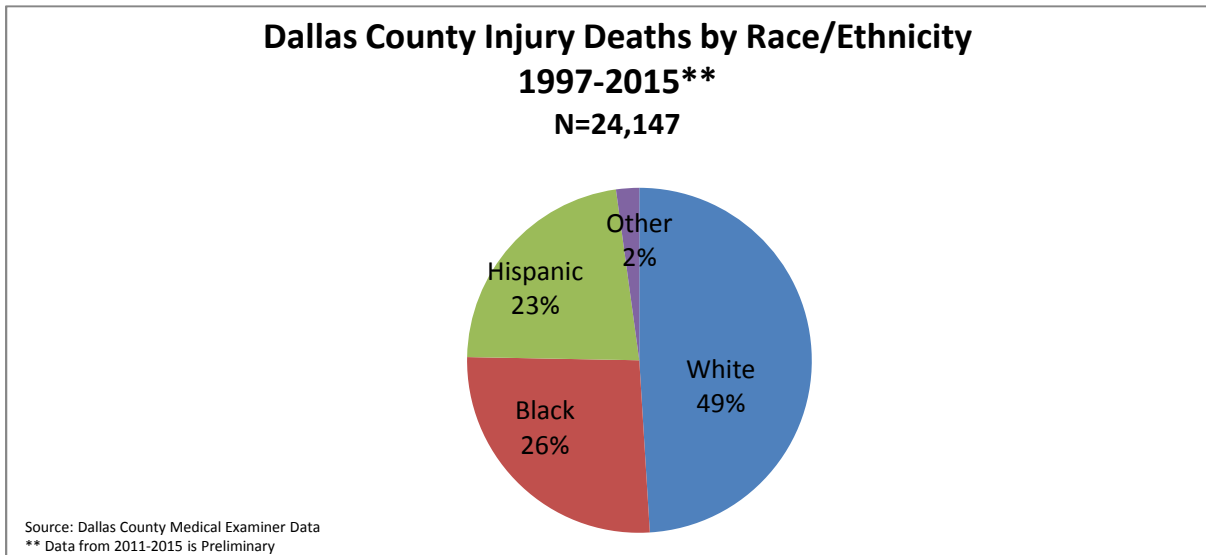
Fifty-three percent of the injury deaths occurred between ages 20-49. The average age of fatal injury victim in Dallas County was 44 years. The age ranged from less than one year to 108 years. The highest death rates were among the very young and the elderly.

### Deaths by Gender

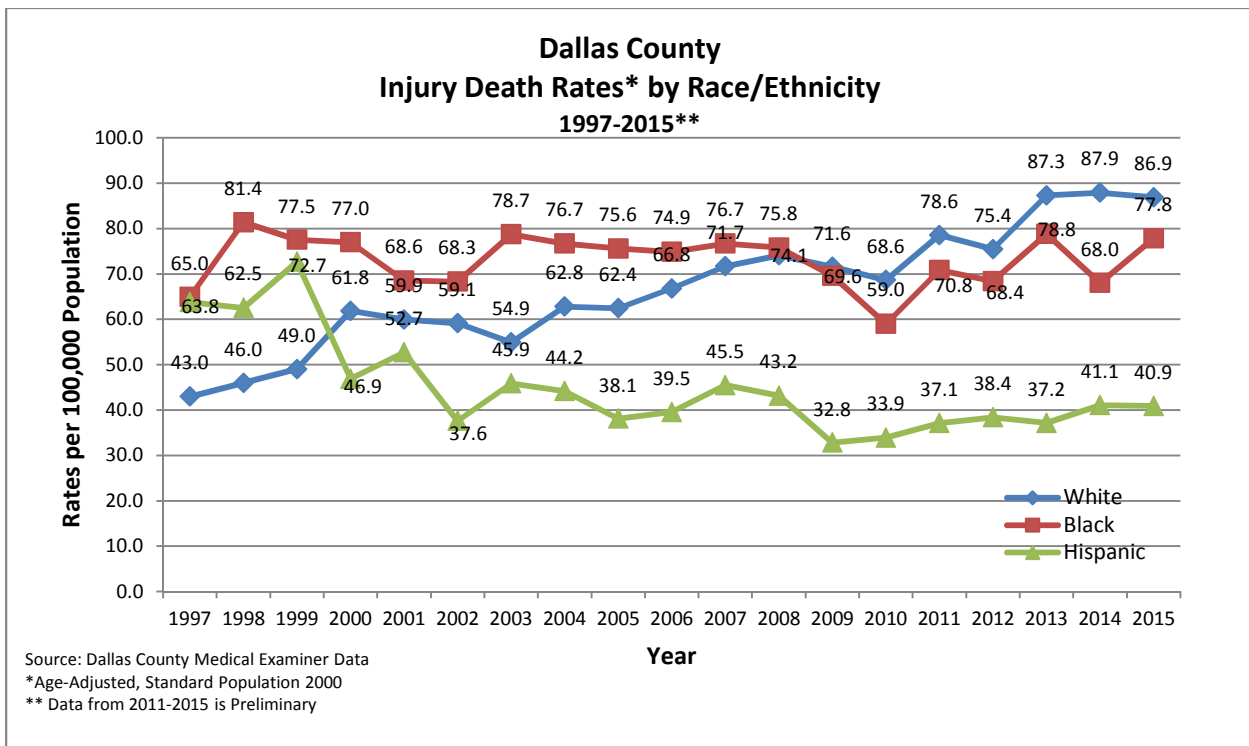


The majority of injury death victims were male.

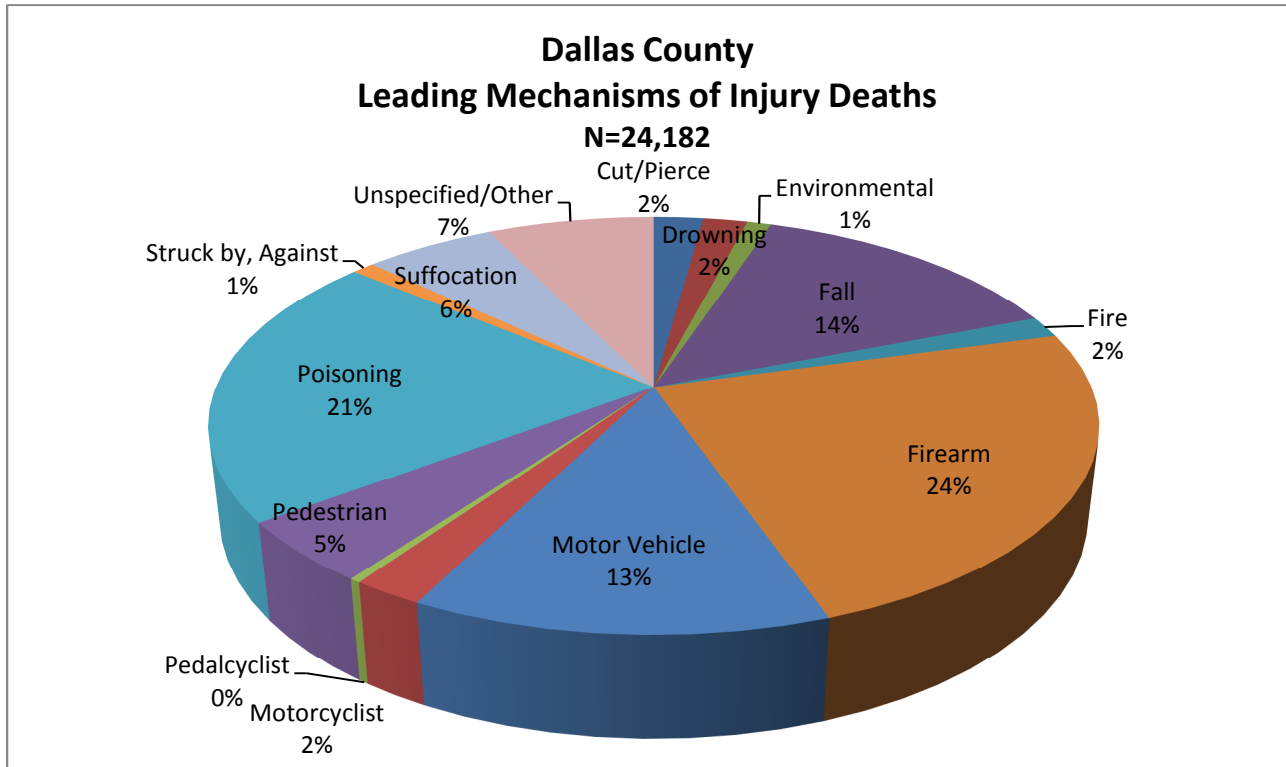
### Deaths by Race



Trends in injury death rates by race from 1997 to 2015 are shown in the next figure. The White population had the lowest injury rate in 1997, but that population had the highest death rate in 2015. The Black population previously had the highest injury death rate, but is now below that of Whites. The Hispanic injury death rate has fallen dramatically over time. Note that in 1997 – 1999, the higher rates in the Hispanics may have been due to inaccurate denominator data, but is probably more accurate since 2000.

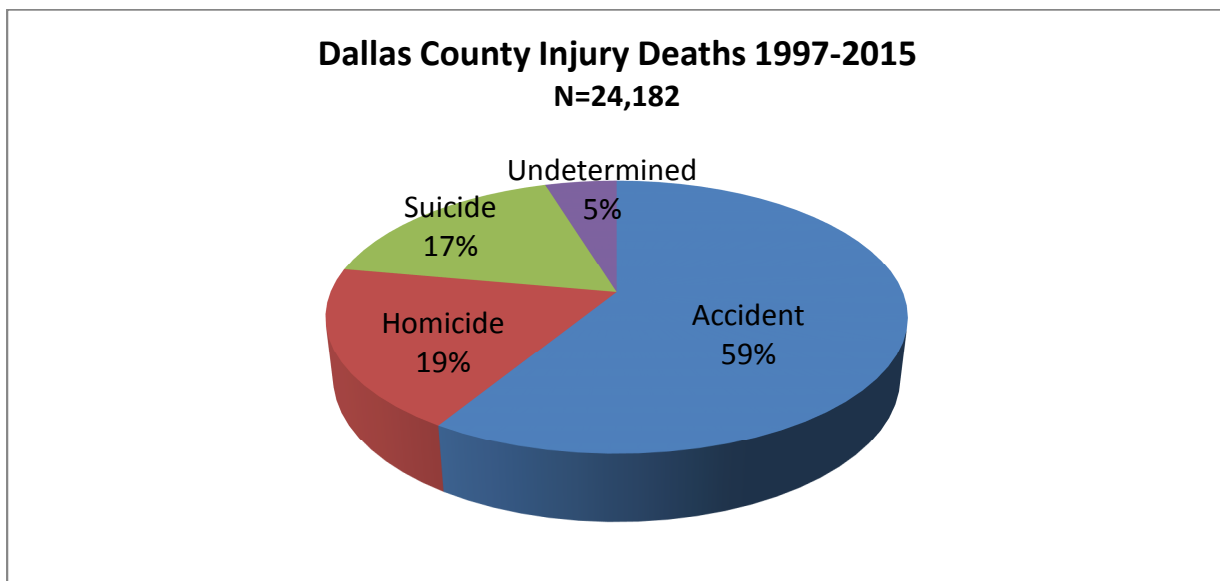


## Leading Mechanisms of Death



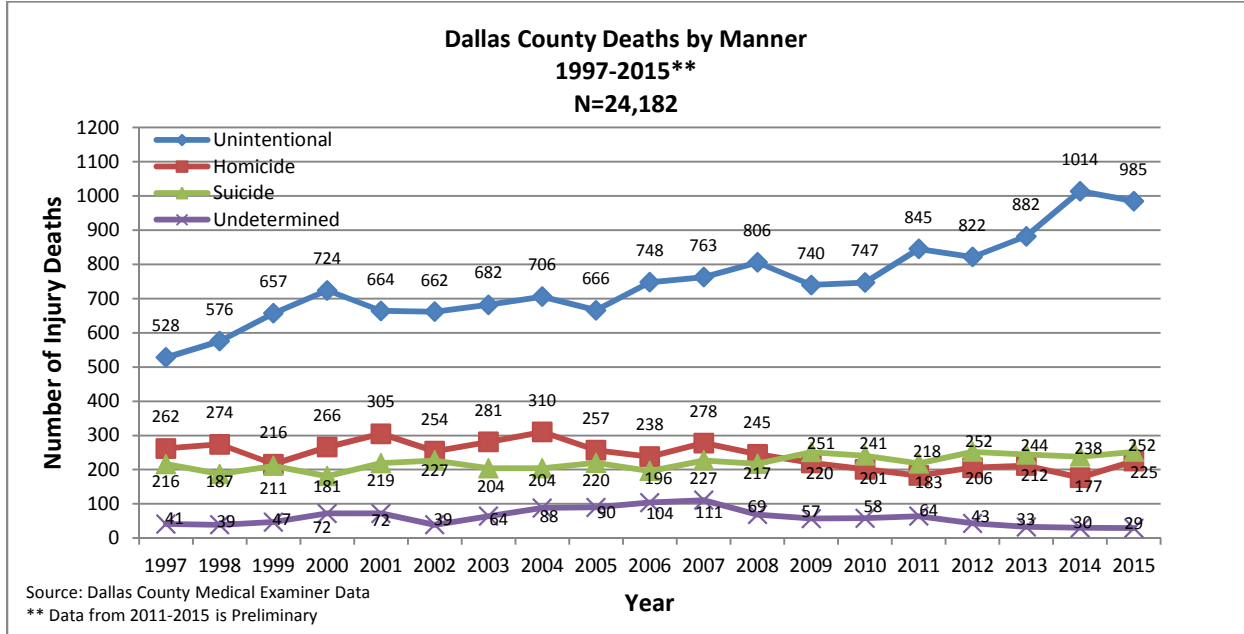
The Mechanisms of death refers to the external cause of the death. Firearms, poisoning, falls and motor vehicle occupants were the leading causes of injury death in Dallas County.

## Manner of Death



The manner of death explains how the death occurred. For an injury death there are 4 classifications of manners: Unintentional, Homicide, Suicide and Undetermined. Suicides and Homicides are intentional

injuries that are deliberate acts. Unintentional injuries are not deliberate. Deaths are classified as Undetermined if there is no compelling information pointing to one specific manner. In Dallas County, 59% of the deaths were classified as Unintentional, 19% as Homicide, 17% as Suicide and 5% were Undetermined.



The manner of death by year: Unintentional injury deaths and death rates have increased from 1997 to 2015. Homicides declined over time and Suicides have shown a slight increase over the past few years.

