

CHILD SUICIDE DEATHS

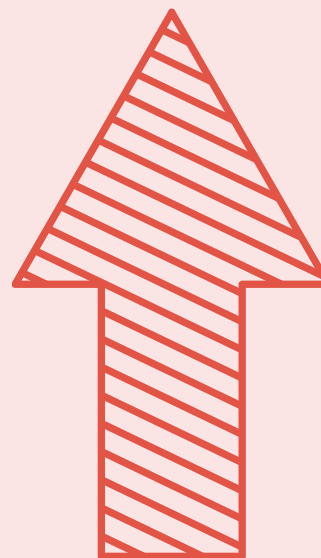
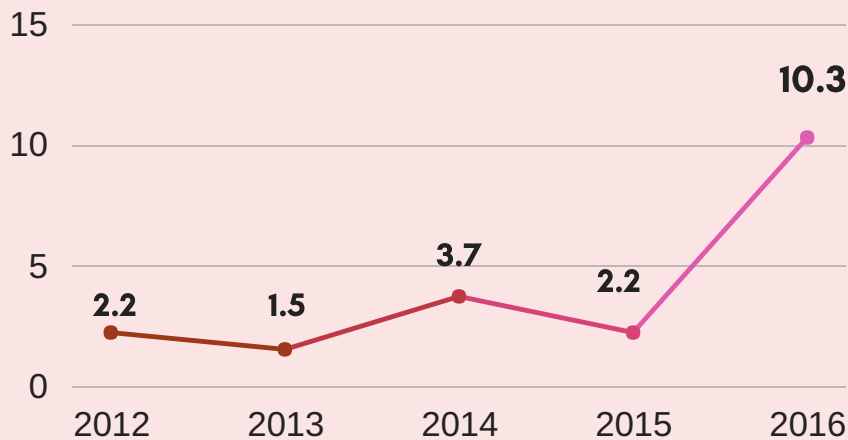
AGE 14-17 YRS

2012-2016

DALLAS COUNTY

DALLAS COUNTY CHILD SUICIDE RATES

* Age 14-17, 2012-2016, Rates are per 100,000



79%

Suicide rate for children age 14-17 in Dallas County jumped 79% from 2015-2016



5 out of 10 children that committed suicide in Dallas County were females

3.7

Male

Rate
per 100,000

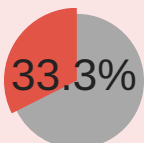
4.2

Female

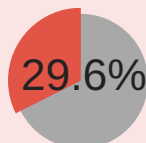


48.1% of all child suicides were completed by hanging

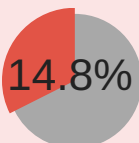
CHILD SUICIDE DEATH STATISTICS



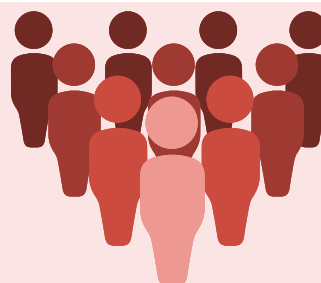
Relationship Issues prior to death



Prior Mental Health Diagnosis/Treatment History



Prior Suicide Attempt



Age

17 **40.7%**

16 **11.1%**

15 **25.9%**

14 **22.2%**

51.8% of child suicides were completed by children 16-17 years of age

National Suicide Prevention Lifeline
1-800-273-TALK (8255)

CRISIS Text Line
Text HOME (4663) to 741741

Check out the Texas Department of State Health Services website for more information on suicide prevention programs.